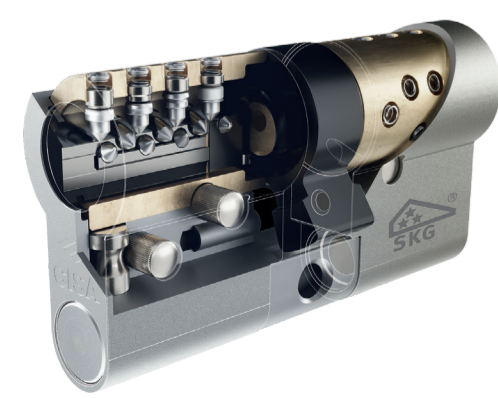




CISA recommends choosing a cylinder based on a scale from 1 to 7 which takes the following parameters into account:

	RS5	RX	AP4 S	TEKNO iNovate	Astral S	C3000 S	C3000	ASIX P8	ASIX	C2000
	1 2 3 4 5 6 7	1 2 3 4 5 6 7	1 2 3 4 5 6 7	1 2 3 4 5 6 7	1 2 3 4 5 6 7	1 2 3 4 5 6 7	1 2 3 4 5 6 7	1 2 3 4 5 6 7	1 2 3 4 5 6 7	1 2 3 4 5 6 7
Resistance to picking thanks to special pins and drivers.	● ●	● ●	● ●	●	●	●	●	●		
Resistance to bumping - RS5 and RX: special driver assembly; - other cylinders: "Bump Key Power" (BKP) system.	● ●	● ●	●	●	●	●	●	●		
Resistance to snap - RS5 and RX: rotor assembly fitted inside; - other cylinders: with Snap Resistant system or controlled snapping.	● ●	● ●	●	●	●	●	●			
Resistance to decoders (even Topolino type) - RS5 and RX thanks to radial technology; - other cylinders equipped with special patented components.	●	●	●	●	●			●		
Drill resistance with pins, drivers and inserts in carbonitrided steel on both sides of the cylinder.	●	●	●	●	●	●	●	●	●	●
Cylinder clutch system the door can be opened from the outside even with the key inserted inside.	●	●	●	●	●	●	●	●		
Protected key duplication - digital duplication request with SECURICARD, for RS5 (only at CISA) and RX (at Red eXpert centres); - upon presentation of the SECURITY CARD at CISA authorised centres, for the other cylinders.	● ●	● ●	●	●		●	●			
Combinations The maximum number of different keys/cylinders.	8 billion	8 billion	40 million	1.6 million	1.6 million	240,000	240,000	260,000	30,000	30,000
Certifications	ICIM SKG	ICIM SKG	ICIM SKG	ICIM SKG	ICIM SKG	ICIM SKG	SKG	ICIM SKG	SKG	



Latest-generation radial technology
The RS5 and RX cylinders use the **new key bitting system with 16 carbonitrided steel pins arranged radially on 5 rows**. They have been awarded the highest **SKG*** certification** against the most advanced forced entry techniques.

New patented modular system
The new rotor fitted inside the cylinder increases its resistance (**+60% resistance to pulling and +700 kg load resistance to tearing**). This makes it possible to produce **any size cylinder** between 30-30 and 100-100 with 5 mm increments on each side.



Mechanical key protection
The RS5 and RX keys are protected **against cloning and counterfeiting by mechanical patents valid until 2040**. Key duplication is only possible at CISA (RS5) or at Red eXpert centres (RX).



Digital key duplication
Requests for duplications can only be made upon presentation of the SECURICARD. By activating your SECURICARD account you will be able to: check the duplications log, enable the 2-step duplication authorisation (OTP) and generate a digital duplication request (TICKET).

